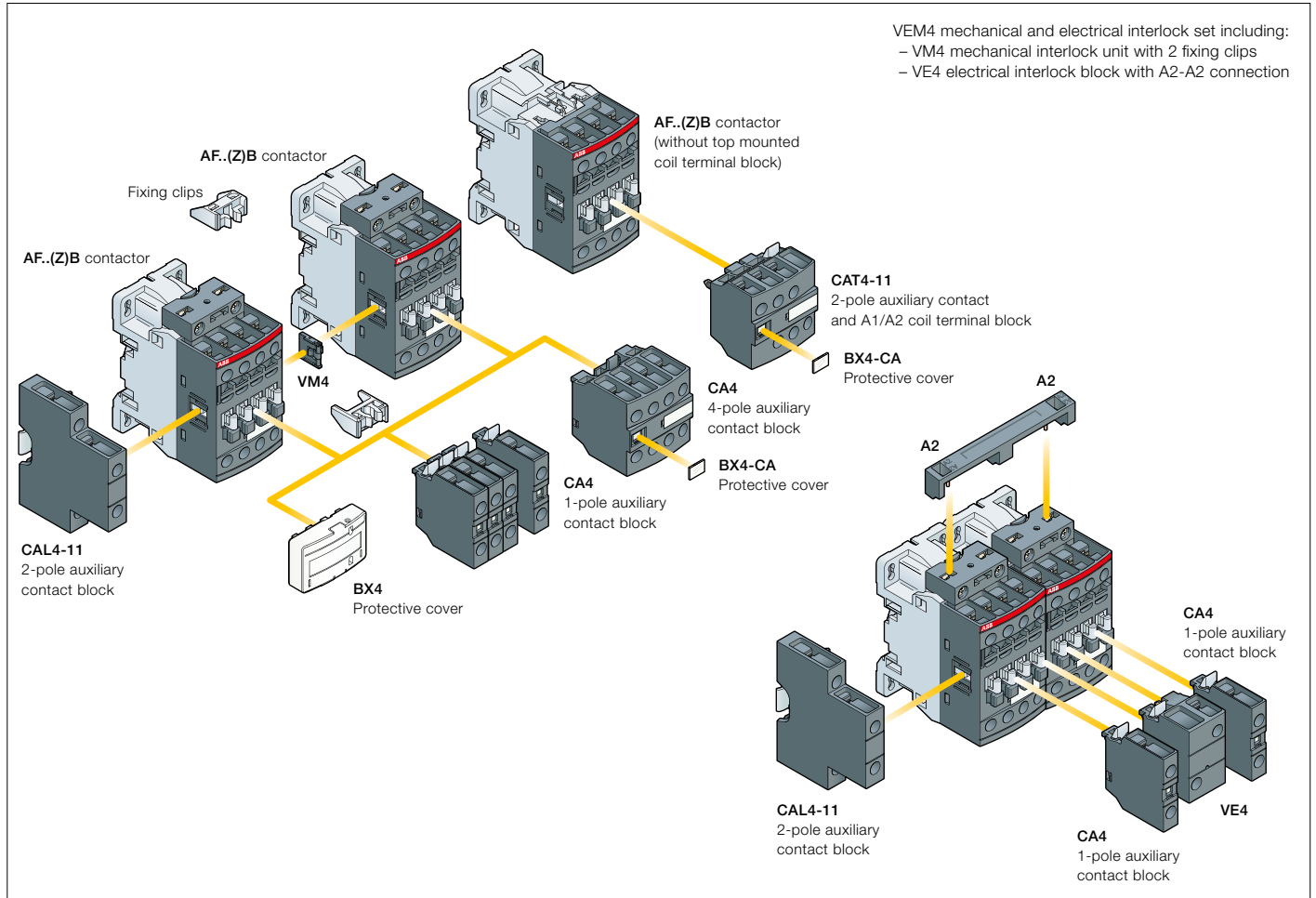


# AF09(Z)B ... AF38(Z)B 3-pole contactors

## Main accessories

### Contactor and main accessories (other accessories available)



### Main accessory fitting details

Many configurations of accessories are possible depending on whether these are front-mounted or side-mounted.

Contactor types	Main poles	Built-in auxiliary contacts	Front-mounted accessories			Electrical and mechanical interlock set (between 2 contactors)		Side-mounted accessories		
			Auxiliary contact blocks			VEM4		Auxiliary contact blocks		
			1-pole CA4	2-pole CAT4-11	4-pole CA4			Left side	Right side	
			Max. N.C. built-in and add-on N.C. auxiliary contacts: 4 N.C. max. on positions 1, 2, 3, 4 and 3 N.C. max. on position 5					2-pole CAL4-11		
AF09(Z)B ... AF16(Z)B	3	0	0	1	4 max.	or 1	or 1	-	+ 1	-
AF09(Z)B ... AF16(Z)B	3	0	1	0	2 max.	or 1	-	-	+ 1	+ 1
AF26(Z)B ... AF38(Z)B	3	0	0	0	3 max.	-	-	+ 1	+ 1	or 1

# AF09(Z)B ... AF38(Z)B 3-pole contactors

## Connection with standard ferrules

### Main accessories



CA4-10-T



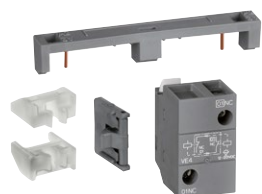
CA4-22M



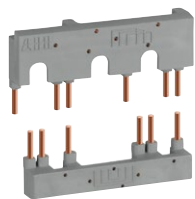
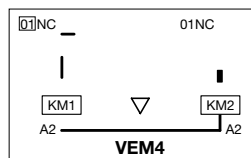
CAL4-11-T



CAT4-11E



VEM4



BER16-4



LDC4



BX4



BX4-CA



BP38-4

#### Ordering details (1)

For contactors	Auxiliary contacts	Type	Order code	Pkg qty	Weight (1 pce)
					kg

#### Front-mounted instantaneous auxiliary contact blocks

Contactors	NO	NC	Type	Order code	Pkg qty	Weight (1 pce)
AF09(Z)B ... AF38(Z)B	1	0	CA4-10-T	1SBN010110T1010	10	0.014
	0	1	CA4-01-T	1SBN010110T1001	10	0.014
	2	2	CA4-22M	1SBN010140R1122	1	0.055
	3	1	CA4-31M	1SBN010140R1131	1	0.055
AF26(Z)B ... AF38(Z)B-30-00	1	3	CA4-13M	1SBN010140R1113	1	0.055
	0	4	CA4-04M	1SBN010140R1104	1	0.055
	2	2	CA4-22E	1SBN010140R1022	1	0.055
	3	1	CA4-31E	1SBN010140R1031	1	0.055
AF09(Z)B ... AF16(Z)B-30-01	4	0	CA4-40E	1SBN010140R1040	1	0.055
	0	4	CA4-04E	1SBN010140R1004	1	0.055
	2	2	CA4-22U	1SBN010140R1322	1	0.055
	3	1	CA4-31U	1SBN010140R1331	1	0.055
	4	0	CA4-40U	1SBN010140R1340	1	0.055

#### Side-mounted instantaneous auxiliary contact blocks

Contactors	NO	NC	Type	Order code	Pkg qty	Weight (1 pce)
AF09(Z)B ... AF38(Z)B	1	1	CAL4-11-T	1SBN010120T1011	10	0.04

#### Front-mounted instantaneous auxiliary contact and A1/A2 coil terminal blocks

Contactors	NO	NC	Type	Order code	Pkg qty	Weight (1 pce)
AF09(Z)B ... AF16(Z)B-30-10	1	1	CAT4-11M	1SBN010151R1111	1	0.04
AF26(Z)B ... AF38(Z)B-30-00	1	1	CAT4-11E	1SBN010151R1011	1	0.04
AF09(Z)B ... AF16(Z)B-30-01	1	1	CAT4-11U	1SBN010151R1311	1	0.04

#### Mechanical interlock unit

Contactors	Type	Order code	Pkg qty	Weight (1 pce)
AF09(Z)B ... AF38(Z)B	VM4	1SBN030105T1000	10	0.005

Note: VM4 includes 2 fixing clips (BB4) to maintain together both contactors.

#### Mechanical and electrical interlock set

Contactors	NO	NC	Type	Order code	Pkg qty	Weight (1 pce)
AF09(Z)B ... AF16(Z)B	0	2	VEM4	1SBN030111R1000	1	0.035

Note: VEM4 includes a VM4 mechanical interlock unit with 2 fixing clips (BB4), a VE4 electrical interlock block. VE4 block must be used with A2-A2 connection to respect the electrical connection diagram.

#### Connection sets for reversing contactors

Contactors	Type	Order code	Pkg qty	Weight (1 pce)
AF09(Z)B ... AF16(Z)B	BER16-4	1SBN081311R1000	1	0.045
AF26(Z)B ... AF38(Z)B	BER38-4	1SBN082311R1000	1	0.1

#### Additional coil terminal block

Contactors	Type	Order code	Pkg qty	Weight (1 pce)
AF09(Z)B ... AF38(Z)B	LDC4	1SBN070156T1000	10	0.01

#### Protective covers

Contactors	Type	Order code	Pkg qty	Weight (1 pce)
All 1-stack contactors	BX4	1SBN110108T1000	10	0.006
For 4-pole CA4 and 2-pole CAT4 auxiliary contact blocks	BX4-CA	1SBN110109W1000	50	0.001

#### Mounting piece

Contactors	Type	Order code	Pkg qty	Weight (1 pce)
AF09(Z)B ... AF38(Z)B	BP38-4	1SBN112303T1000	10	0.003

(1) For more information, refer to "Accessories" section.